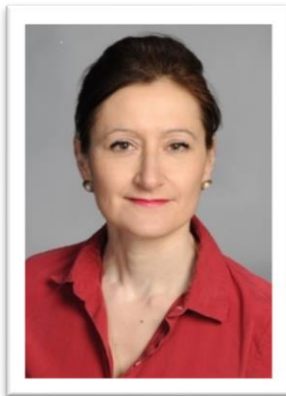


Dr. Bindee Kuriya

Dr. Kuriya is a clinician investigator and assistant professor at the University of Toronto.

Dr. Kuriya's clinical expertise is inflammatory arthritis, namely rheumatoid arthritis, and her research primarily focuses on pharmacoepidemiology and outcomes of rheumatoid arthritis. She has a keen interest in using observational cohorts and administrative databases to study important co-morbidities such as cardiovascular disease and mental illness in RA.

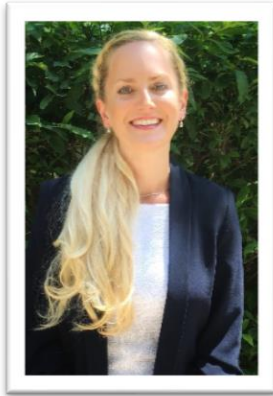
In addition, she has an interest in examining health care utilization among those living with inflammatory arthritis.



Dr. Sasha Bernatsky

Dr. Sasha Bernatsky is a rheumatologist with a PhD in epidemiology, who is a professor at McGill University in the Department of Medicine, Divisions of Clinical Epidemiology and Rheumatology. Her research focuses on outcomes in the rheumatic diseases, including morbidity, mortality, and the economic impact of conditions such as rheumatoid arthritis (RA) and lupus erythematosus (SLE).

A great part of her research has focused on a large international cohort study of cancer and mortality in SLE. Further investigations include assessing various risk factors for cancer in SLE and using various administrative database sources to assess outcomes in rheumatic diseases. These endeavours focus on health-related outcomes in RA, SLE, and other systemic autoimmune rheumatic conditions, and the economic impact of rheumatic diseases.



Dr. Jessica Widdifield

Jessica Widdifield PhD is a Scientist at Sunnybrook Research Institute and ICES, and Assistant Professor at the University of Toronto. Her research involves improving the evaluation, care and patient outcomes of rheumatic and musculoskeletal diseases (RMDs). Her research focuses on population-based epidemiological evaluations, improving methods for research and surveillance, pharmacoepidemiology, and health services research using administrative databases and electronic medical records.

Her research program encompasses a multidisciplinary approach linking the structure of care settings, processes of care, patient outcomes and experiences of care across the continuum of health care delivery, including primary care, rheumatology and orthopaedics.